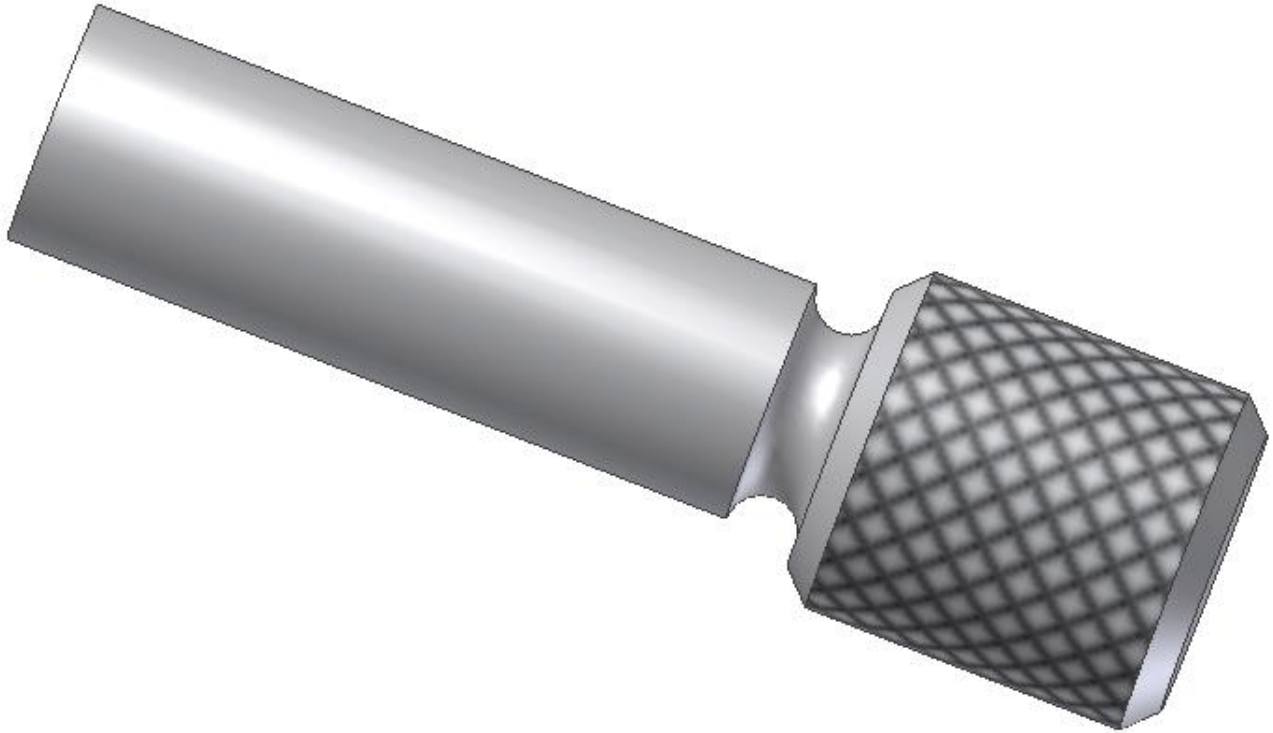


## Flächeneigenschaften von einzelnen Partien



Sollen nur einzelne Partien eines Teils „eingefärbt“ werden, geht man wie folgt vor:

1. Markieren der Stelle des Teils, die „eingefärbt“ werden soll.
2. KM: Eigenschaften > Flächeneigenschaften > Flächenfarbstil wählen.
3. Fertig

Probleme:

Die Bitmaps für die Flächeneigenschaften befinden sich im Ordner:

C:\Programme\Autodesk\Inventor 2008\Textures\surfaces

Die Bilder sind mit englischen Namen bezeichnet und werden im deutschen Inventor übersetzt. So ist es nicht immer einfach, das richtige Bitmap zu finden.

In obigem Bild wurde das Bild „**Stahlmetall (gerändelt)**“ verwendet

1.



Conc\_Pitted.bmp



Copper.bmp



Cork.bmp



Cork\_36dpi.bmp



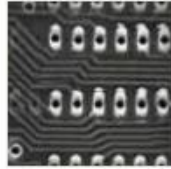
Corrugated\_Tube.bmp



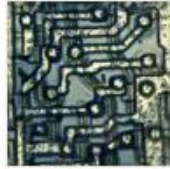
Cracks.bmp



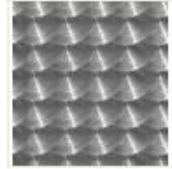
Diamond plate4.bmp



Electronics\_1.bmp



Electronics\_2.bmp



EngineTurning.bmp



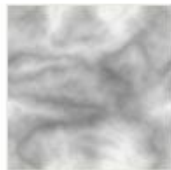
Fabric1.bmp



Fabric2.bmp



Foil1.bmp



Foil2.bmp



Galvanized\_1.bmp



Galvanized\_2.bmp

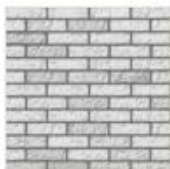


Galvanized\_3.bmp



Jasc Paint Shop Pro

Grating5.bmp



GrayBrick.bmp



Hone.bmp



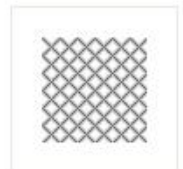
Knurl.bmp



Knurl\_1.bmp



Knurl\_2.bmp



Knurl\_3.bmp



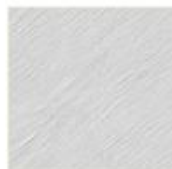
Knurl\_4.bmp



Knurl\_5.bmp



Machined\_01.bmp



Machined\_02.bmp



Matte.bmp



Medrust3.bmp



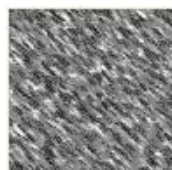
Metal\_1.bmp



Metal\_2.bmp



Metal\_3.bmp



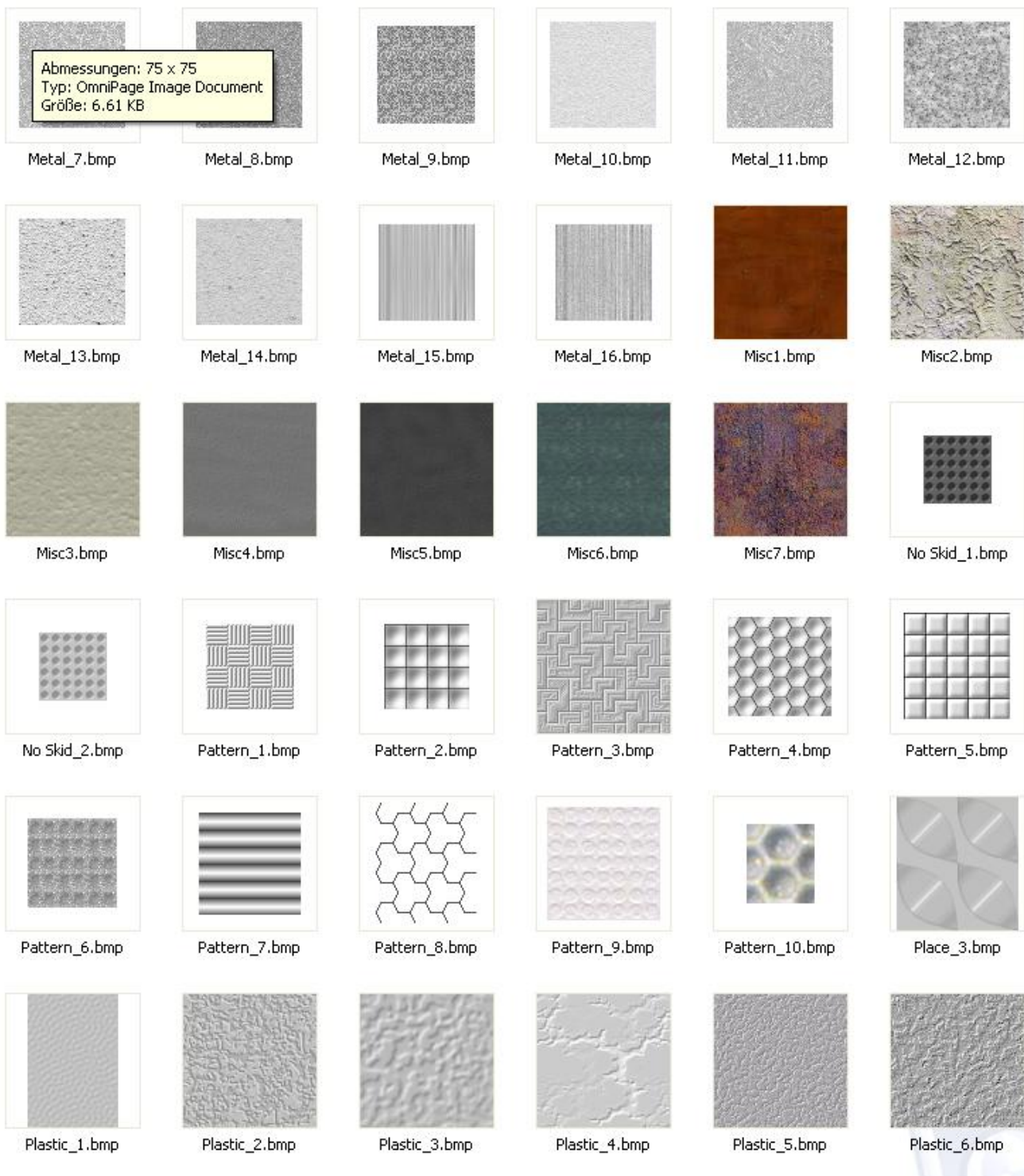
Metal\_4.bmp



Metal\_5.bmp

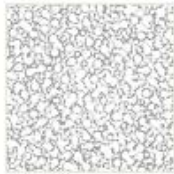


Metal\_6.bmp





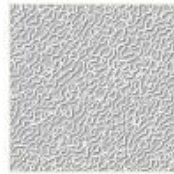
Plastic\_7.bmp



Plastic\_8.bmp



Plastic\_9.bmp



Plastic\_10.bmp



Plastic\_11.bmp



Plate\_1.bmp



Plate\_2.bmp



Plateox2.bmp



Plywood-GradeB.bmp



RedBrick\_1.bmp



RedBrick\_2.bmp



Rice Paper.bmp



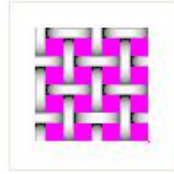
Rust.bmp



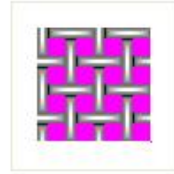
Screen\_1&.bmp



Screen\_2&.bmp



Screen\_3&.bmp



Screen\_4&.bmp



Screen\_5&.bmp



Spiral\_Wrap&.bmp



Steelpl1.bmp



Stone\_1.bmp



Stone\_2.bmp



Stone\_3.bmp



Stone\_4.bmp



Stone\_5.bmp



Stone\_6.bmp



Stone\_7.bmp



Stucco1.bmp



Stucco2.bmp



Stucco3.bmp



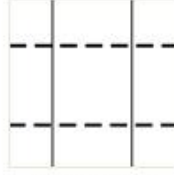
Stucco4.bmp



Upholstery\_1.bmp



Upholstery\_2.bmp



UV Small.bmp



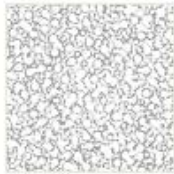
UV.bmp



Water\_1.bmp



Plastic\_7.bmp



Plastic\_8.bmp



Plastic\_9.bmp



Plastic\_10.bmp



Plastic\_11.bmp



Plate\_1.bmp



Plate\_2.bmp



Plateox2.bmp



Plywood-Grade8.bmp



RedBrick\_1.bmp



RedBrick\_2.bmp



Rice Paper.bmp



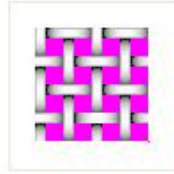
Rust.bmp



Screen\_1&.bmp



Screen\_2&.bmp



Screen\_3&.bmp



Screen\_4&.bmp



Screen\_5&.bmp



Spiral\_Wrap&.bmp



Steelplt.bmp



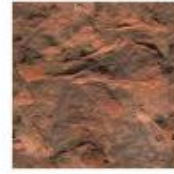
Stone\_1.bmp



Stone\_2.bmp



Stone\_3.bmp



Stone\_4.bmp



Stone\_5.bmp



Stone\_6.bmp



Stone\_7.bmp



Stucco1.bmp



Stucco2.bmp



Stucco3.bmp



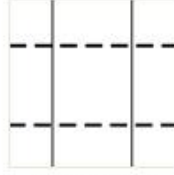
Stucco4.bmp



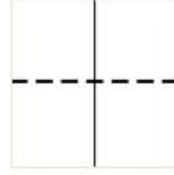
Upholstery\_1.bmp



Upholstery\_2.bmp



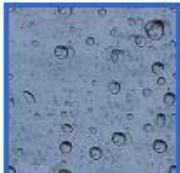
UV Small.bmp



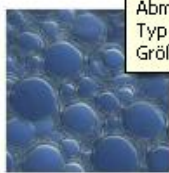
UV.bmp



Water\_1.bmp



Water\_2.bmp



Water\_3.bmp

Abmessungen: 512 x 512  
Typ: OmniPage Image Document  
Größe: 768 KB



weldcat0.bmp



Wire\_Sleeve&.bmp



Wood\_1.bmp



Wood\_2.bmp



Wood\_3.bmp



Wood\_4.bmp



Wood\_5.bmp



Wood\_6.bmp



Wood\_7.bmp



Yellow Green.bmp